

# PN16 “LUGGED” BUTTERFLY VALVE



Potable water service Butterfly Valves with Watermark certification for on and off flow control service. Lever & gear operated. Suitable applications include building services, water, wastewater, general industry, and irrigation water supply.



Model	Catalogue Number
-------	------------------

## PN16 “Lugged” Butterfly Valve

65mm	7240
80mm	7241
100mm	7242
150mm	7243

## PN16 Gear Operated “Lugged” Butterfly Valve

100mm	7242GB
150mm	7243GB
200mm	7244GB

## Technical Specifications

<b>Nominal Diameter</b>	DN65~DN150 Lever Operate
	DN100~DN200 Gear Operate
<b>Nominal Pressure</b>	PN16
<b>Working Temperature</b>	-20°C~+120°C
<b>Working Medium</b>	Potable Water
<b>Connection Type</b>	Lugged
<b>Connection Standard</b>	AS2129 Table E
<b>Design Standard</b>	ATS 5200.012-2005
<b>Test Standard</b>	ISO 5208-2008

## Features and Benefits

- Quality robust construction
- Excellent sealing as a result of unique disk and seat contour
- Single piece 316SS shaft eliminating potential pin and bolt leakages

## Materials

<b>Body</b>	Ductile Iron ASTM A-536
<b>Disc</b>	CF8M ASTM A-743
<b>Stem</b>	316SS ASM A276
<b>Seat</b>	EPDM



# PN16 “LUGGED” BUTTERFLY VALVE

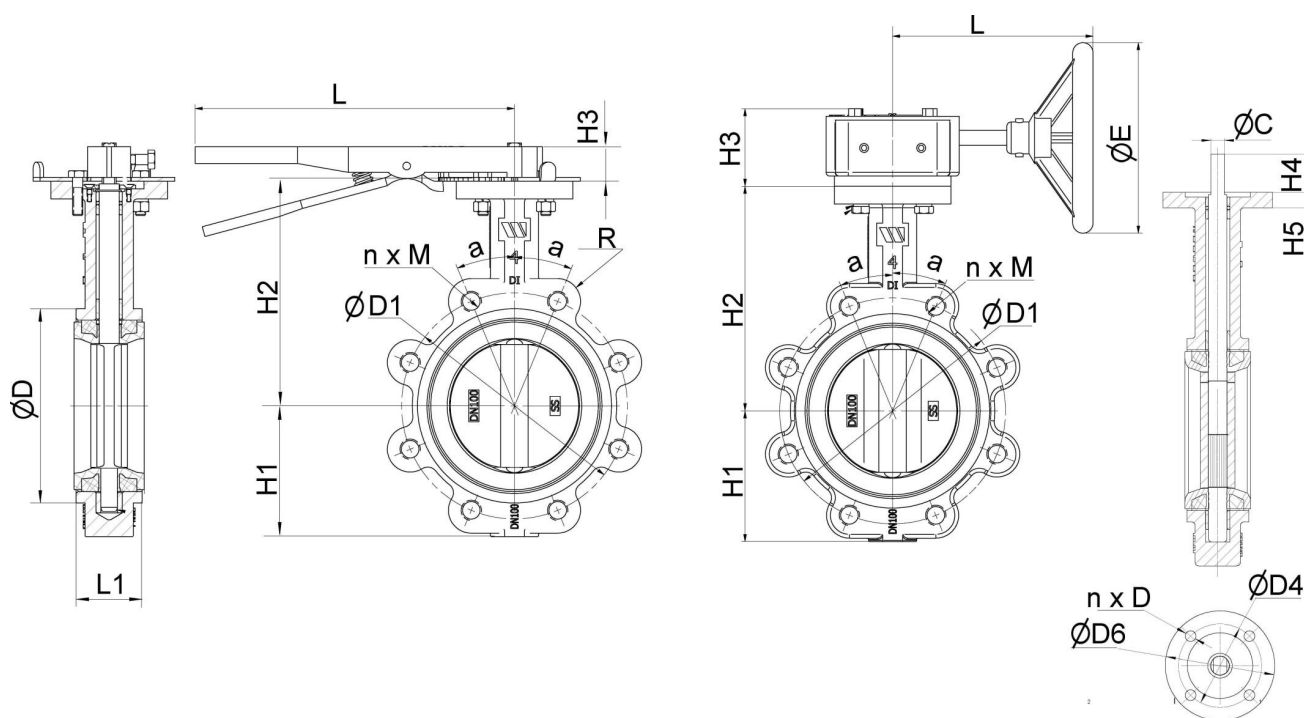


## Dimensions

Size	Contour Dimension				Flange Dimension Meet AS2129 Table E			
DN	H1	H2	ΦD	R	L1	ΦD1	nxM	a
65	77	155.4	105	17	46	127	4xM16	45°
80	89	161.8	120	17	45.21	146	4xM16	45°
100	103	177	153	18	52.07	178	8xM16	22.5°
125	127	189.5	181	20	55.5	210	8xM16	22.5°
150	139	204.2	208	21	55.75	235	8xM16	22.5°
200	165	236	260	20	60.58	292	8xM20	22.5°

Top Flange Dimension								Lever Operated		Gear Operated		
Size	Meet ISO 5211							Blue		Blue		
DN	H4	H5	ΦC	Type	ΦD6	ΦD4	NxD	H3	L	H3	E	L
65	30	13	Φ9	F07	92	70	4xΦ10	32	266.7	66	150	160
80	30	13	Φ9	F07	92	70	4xΦ10	32	266.7	66	150	160
100	30	14	Φ11	F07	92	70	4xΦ10	32	266.7	66	150	160
125	30	14	Φ14	F07	92	70	4xΦ10	32	266.7	66	150	160
150	30	14	Φ14	F07	92	70	4xΦ10	32	266.7	66	150	160
200	30	14	Φ17	F07	125	102	4xΦ12	-	-	82	298	240

NB: All dimensions in millimetres unless otherwise stated.



# PN16 TYPE Y STRAINER



Flomatic PN16 Epoxy Coated Type Y Strainer is designed to provide protection against loose particles (dirt & debris) to upstream pipe, valves and fittings. Used in light commercial and residential application. The bolted access cover allows for ease of servicing and maintenance of the 304 stainless steel mesh filter.



## Catalogue Numbers

Model	Catalogue Number
PN16 65mm	7206
PN16 80mm	7207
PN16 100mm	7208
PN16 150mm	7209
PN16 200mm	7211

## Features and Benefits

- Low head loss
- 304 stainless steel mesh basket
- Table E flanged
- Access cover drain plug
- Installation possible in vertical or horizontal positions
- Compact structure

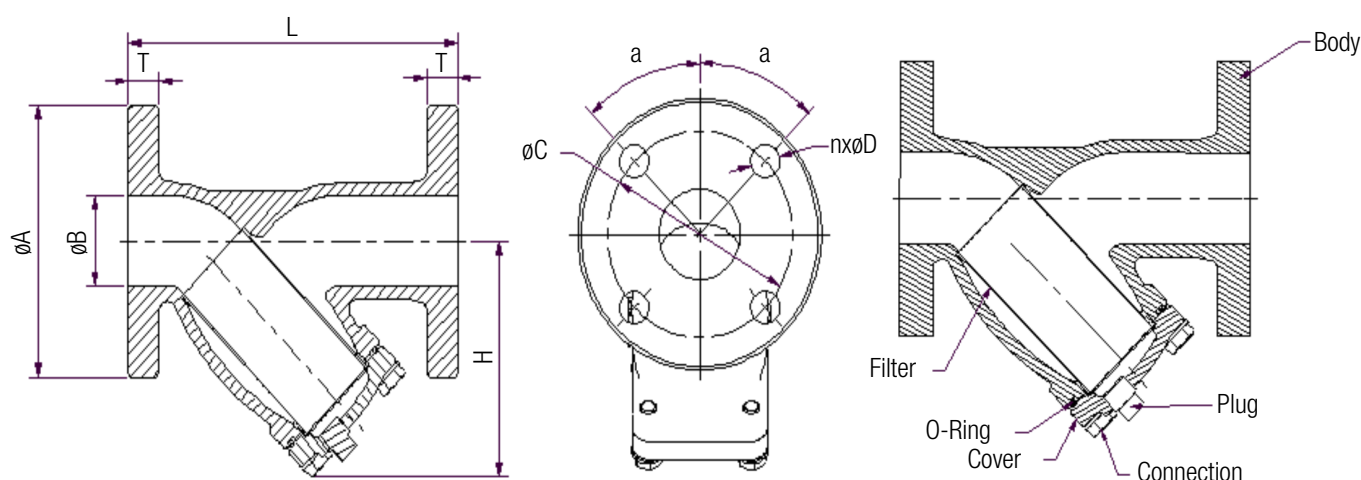
## Technical Specifications

Nominal Diameter	DN65 to DN200
Nominal Pressure	PN16 (1.6MPa)
Body	Material ASTM A-536 Ductile Iron 65-45-12, meets AS/NZS 22802004; Colour Blue, LP4703-G
Cover	Material ASTM A-536 Ductile Iron 65-45-12, meets AS/NZS 22802004; Colour Blue, LP4703-G
Filter	Material 304 Stainless Steel
Connection	Material 304 Stainless Steel
O'Ring	Material NBR, meet AS/NZS 40202005
Plug	Material ASTM A126 Cast Iron
Working Medium	Water & waste water
Temperature Range	0°C to +80°C
Connection Dimension	AS2129 Table E (Flange Standard), BS EN 558-1 (Structure Length Standard)
Test Standard	BS EN 1266-2003, GB/T13927-2008
Certified	ISO 9001

# PN16 TYPE Y STRAINER

## Dimensions

Nominal	Contour Dimension (mm)				Connection Dimension (mm) AS2129-2000				Table E
	L	H	$\phi A$	B	$\phi C$	T	$n \times \phi D$	a	Mesh (mm)
65	290	158	165	65	127	19	4x $\phi 18$	45°	$\phi 1.5$
80	310	177	185	80	146	19	4x $\phi 18$	45°	$\phi 1.5$
100	350	225	215	100	178	22	8x $\phi 18$	22.5°	$\phi 1.5$
150	480	315	280	150	235	22	8x $\phi 22$	22.5°	$\phi 3.5$
200	600	418	335	200	292	25	8x $\phi 22$	22.5°	$\phi 3.5$



# DOUBLE CHECK VALVES



The RMC/Flomatic Double Check Valve is designed to give protection against medium hazard backflow situations.

Size	Device Only	Complete	Complete with Lockable Ball Valve
20mm	SD002	SD002C	SD002C-L
25mm	SD003	SD003C	SD003C-L
32mm	SD004	SD004C	SD004C-L
40mm	SD005	SD005C	SD005C-L
50mm	SD006	SD006C	SD006C-L
65mm	SD007	SD007C	-
80mm	SD008	SD008C	-
100mm	SD009	SD009C	-
150mm	SD010	SD010C	-
200mm	SD011	SD011C	-



## Description

The device features two mechanically independent, spring loaded, center stem, guided check valves. The device has a cast and bronze body, with a single access cover. The assembly has three vertical test cocks and two shut off valves which are quarter-turn, full port and resilient seated.

The seat of each check valve is constructed from Noryl™ and is replaceable. The check valves are held in place by stainless steel clips and the check valve assemblies are non-interchangeable with silicone discs.

## Application

The Flomatic Double Check Valve provides protection to the potable water supply from contamination in medium hazard applications such as industrial, commercial and medical equipment. Installation can be in horizontal and vertical position.

## Materials

	20mm - 50mm	65mm - 200mm
<b>Valve Body</b>	Bronze	Ductile Iron
<b>Access Cover</b>	Bronze	Ductile Iron
<b>Polymers</b>	Noryl™, NSF Listed	Noryl™, NSF Listed
<b>Elastomers</b>	Silicone	Silicone, Buna-n (FDA approved)
<b>Springs</b>	Stainless Steel	Stainless Steel
<b>Coating</b>	-	FDA approved fusion epoxy

## Features and Benefits

- Corrosion resistant
- Designed for easy and quick in line maintenance and testing
- Low head loss
- Interchangeable poppet and spring
- Maximum working pressure of 1200kPa
- Operating temperature range of 1°C to 82°C up to 50mm BSP Threaded
- Operating temperature range of 1°C to 60°C from 65mm to 200mm Flanged Table E
- Approved to AS 2845-1



# DOUBLE CHECK VALVES

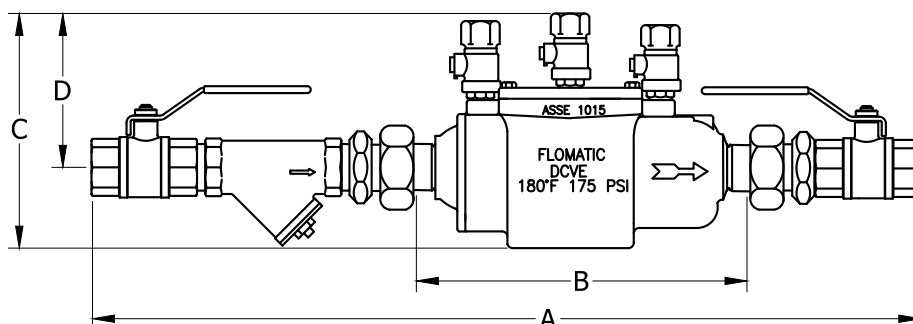
## Technical Specifications

	20mm - 50mm	65mm - 200mm
Maximum working pressure	1200kPa	1200kPa
Maximum working temperature	82°C	60°C
Hydrostatic test pressure	2400kPa	2400kPa
Pipe connection	BSP Thread	Table E AS2129 Flanged

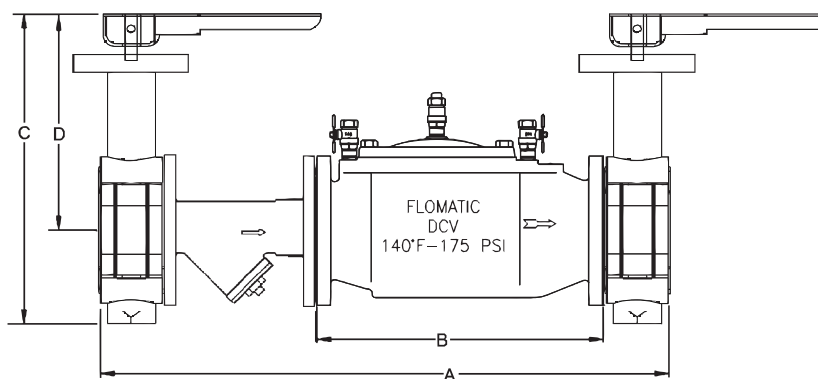
## Dimensions

Size	Part #	A	B	C	D	Width	Wgt with BV	Wgt less BV
mm	-	mm	mm	mm	mm	mm	kg	kg
20	SD002C	490	205	120	85	85	3.9	2.5
25	SD003C	540	205	120	85	85	4.8	2.6
32	SD004C	625	230	125	85	85	6.6	3.2
40	SD005C	730	315	170	115	120	12.9	8.3
50	SD006C	810	315	200	120	130	14.6	8.3

Note: Lockable assembly has same dimensions.



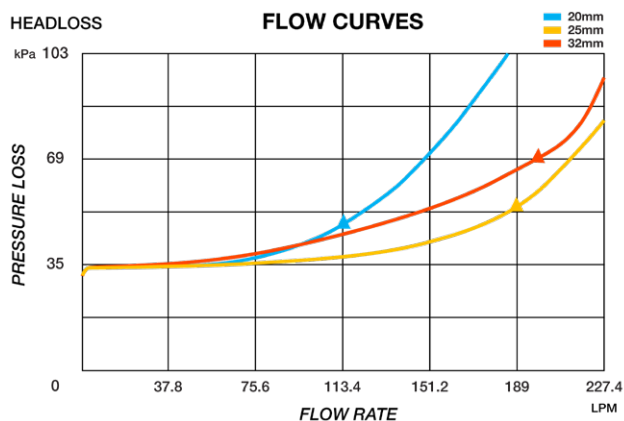
Size	Part #	A	B	C	D	Width	Wgt with BV	Wgt less BV
mm	-	mm	mm	mm	mm	mm	kg	kg
65	SD007C	830	450	251	184	200	47.3	22.75
80	SD008C	850	450	263	191	200	51	22.75
100	SD009C	990	535	305	210	250	131.75	45.5
150	SD010C	1125	535	360	235	310	138.5	66.75
200	SD011C	1363	699	423	273	350	269	129.5



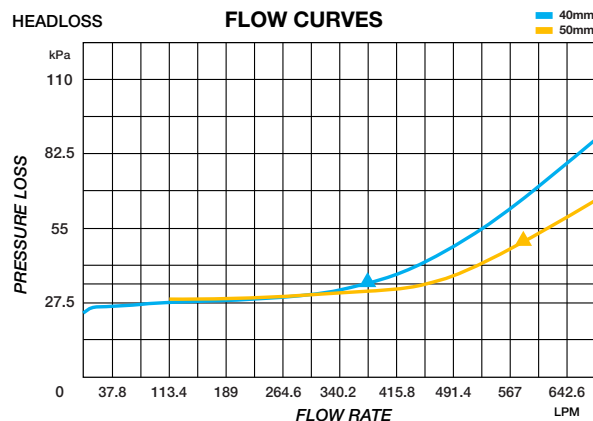
# DOUBLE CHECK VALVES

## Flow Characteristics

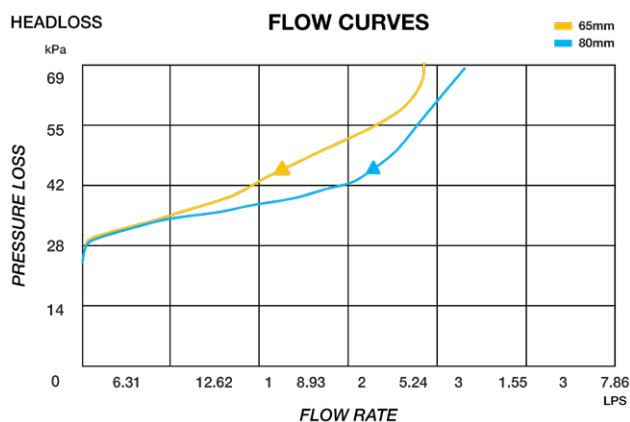
20-32mm MODEL DCV



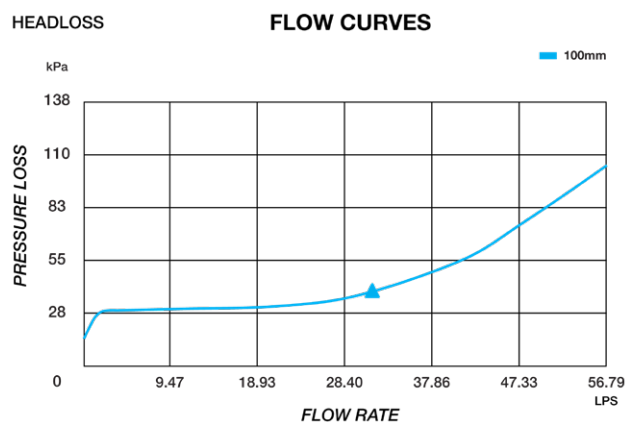
40-50mm MODEL DCV



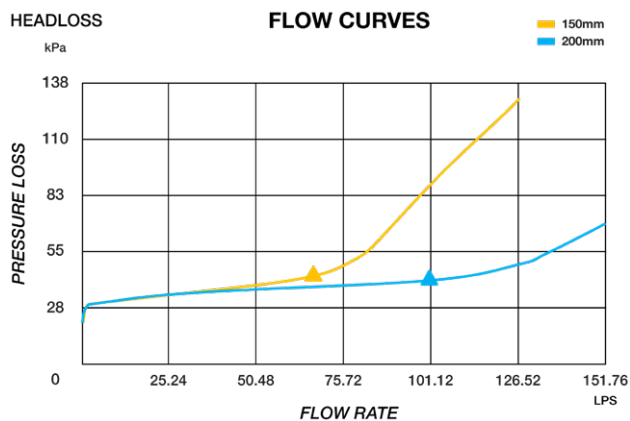
65-80mm MODEL DCV



100mm MODEL DCV



150-200mm MODEL DCV





# Backflow Prevention Repair Kit

## Scope of Use / Specification Sheet

The Flomatic® Backflow Prevention Repair Kit offers top performance and reliable parts. The repair kit provides easy and economical servicing. The single top plate entry cover allows quick access to the side entry checks and RPZ relief.



### Features and Benefits

- Single access cover
- Complete relief valve stem modules
- Separate side entry checks with O-Ring seal
- Stainless steel spring clips to secure check seats
- Stainless steel relief valve seats

### Technical Specifications

	20, 25, 32, 40, 50 (mm)	65, 80, 100, 150, 200 (mm)
Max. working pressure	1200kPa	1200kPa
Max. working temperature	82°C	60°C

### Installation

Installation is subject to the requirements of the applicable regulatory authority, the National Construction Code Volume Three – Plumbing Code of Australia, associated reference standards as applicable at the time and AS/NZS 3500.1.

### Description

The Flomatic Backflow Repair Kits are listed as:

- RPZ** First Check Assembly, Second Check Assembly, Relief Assembly Kit, and Rubber Service Kit
- DCV** First Check Assembly, Second Check Assembly and Rubber Service Kit
- SCV** First Check Assembly, Rubber Service Kit

The check valve assembly consists of stainless steel shaft, plastic seat, brass disc holder and brass spring retainer. The RPZ relief consists of the sealing cover relief valve diaphragm, relief stem and spring.

### Warranty

Reliance Worldwide Corporation (Aust.) Pty. Ltd. (RWC) will either replace or repair any defective goods where the defect arose as a result of manufacture within the warranty period. You may contact RWC at the phone number, address or e-mail shown below for further information or to make a claim.

Visit [www.rmc.com.au/warranty](http://www.rmc.com.au/warranty) to view the warranty statement in full and for further important information.



## Backflow Prevention Repair Kit

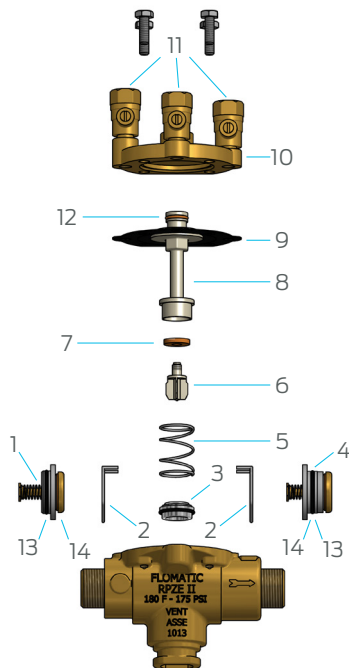
### RPZD Repair Kit

#### Catalogue Number

Size	Relief	First Check	Second Check	Rubber Kit
15 – 20mm	89880P9 (3,5,6,7,8,9,12)	89878P9 (1,2)	89879P9 (2,4)	B93RK99 (3,7,9,12,13(x2),14(x2))
25mm	89850P0 (3,5,6,7,8,9,12)	89848P0 (1,2)	89849P0 (2,4)	B92RK00 (3,7,9,12,13(x2),14(x2))
32mm	89850P2 (3,5,6,7,8,9,12)	89848P2 (1,2)	89849P2 (2,4)	B92RK02 (3,7,9,12,13(x2),14(x2))
40 – 50mm	89850P3 (3,5,6,7,8,9,12)	89848P3 (1,2)	89849P3 (2,4)	B92RK03 (3,7,9,12,13(x2),14(x2))
65 – 80mm	89850P5 (3,4,6,7,8,9,10,12)	89848P5 (1,2)	89849P5 (2,5)	B92RK05 (3,4,6,10,12,13(x2),14(x2))
100mm	89850P7 (3,4,6,7,8,9,10,12)	89848P7 (1,2)	89849P7 (2,5)	B92RK07 (3,4,6,10,12,13(x2),14(x2))
150mm	89850P9 (3,4,6,7,8,9,10,12)	89848P9 (1,2)	89849P9 (2,5)	B92RK09 (3,4,6,10,12,13(x2),14(x2))
200mm	89850P10 (3,4,6,7,8,9,10,12)	89848P10 (1,2)	89849P10 (2,5)	B92RK10 (3,4,6,10,12,13(x2),14(x2))

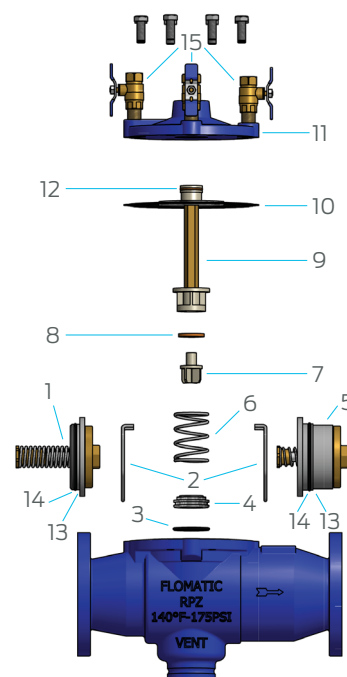
#### RPZ

No.	Description	No.	Description
1	First Check Valve	8	Relief Valve Stem
2	Check Valve Retainers	9	Relief Valve Diaphragm
3	Relief Valve Seat	10	Top Plate Assembly
4	Second Check Valve	11	Test Cocks
5	Spring	12	Stem O-Ring
6	Relief Valve Disc Retainer	13	Check O-Ring
7	Relief Valve Disc	14	Check Washers



#### RPZ

No.	Description	No.	Description
1	First Check Valve	9	Relief Valve Stem
2	Check Valve Retainers	10	Relief Valve Diaphragm
3	Seat O-Ring	11	Top Plate Assembly
4	Relief Valve Seat	12	Stem O-Ring
5	Second Check Valve	13	Check O-Ring
6	Spring	14	Check Washers
7	Relief Valve Disc Retainer	15	Test Cocks
8	Relief Valve Disc		



## Backflow Prevention Repair Kit

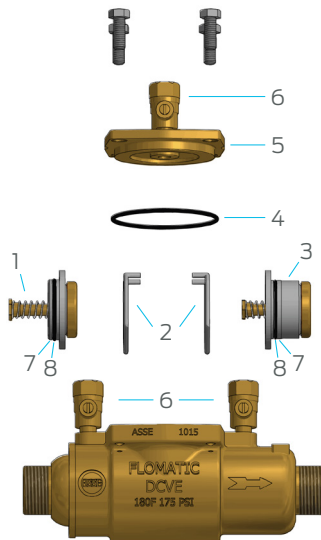
### DCV Repair Kit

#### Catalogue Number

Size	First Check	Second Check	Rubber Kit
20 – 25mm	89855P0 (1, 2)	89849P0 (2, 3)	B91RK00 (4, 7(x2), 8(x2))
32mm	89855P2 (1, 2)	89849P2 (2, 3)	B91RK02 (4, 7(x2), 8(x2))
40 – 50mm	89855P3 (1, 2)	89849P3 (2, 3)	B91RK03 (4, 7(x2), 8(x2))
65 – 80mm	89855P5 (1, 2)	89849P5 (2, 3)	B91RK05 (4, 7(x2), 8(x2))
100mm	89855P7 (1, 2)	89849P7 (2, 3)	B91RK07 (4, 7(x2), 8(x2))
150mm	89855P9 (1, 2)	89849P9 (2, 3)	B91RK09 (4, 7(x2), 8(x2))
200mm	89855P10 (1, 2)	89849P10 (2, 3)	B91RK10 (4, 7(x2), 8(x2))

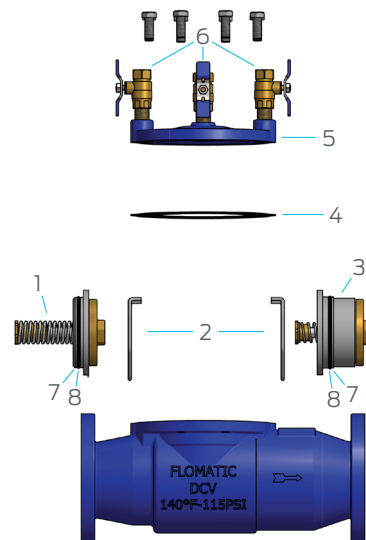
#### DCVE

No.	Description	No.	Description
1	First Check Valve	5	Top Plate Assembly
2	Check Valve Retainers	6	Test Cocks
3	2nd Check Valve	7	Check O-Rings
4	Top Plate O-Ring	8	Check Washers



#### DCV

No.	Description	No.	Description
1	1st Check Valve	5	Top Plate Assembly
2	Check Valve Retainers	6	Test Cocks
3	2nd Check Valve	7	Check O-Rings
4	Top Plate Gasket	8	Check Washers



## Backflow Prevention Repair Kit

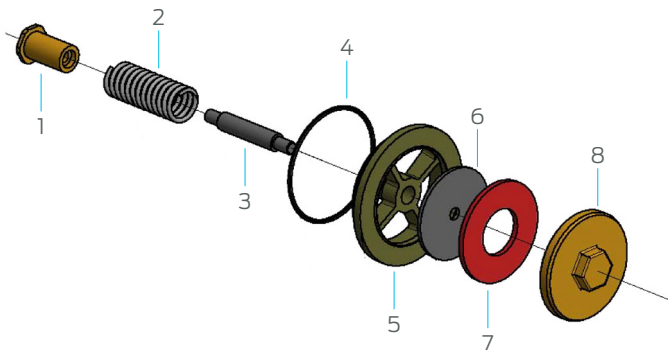
### SCV/SDCV Repair Kit

#### Catalogue Number

Size	Single Check – First Check Valve Assembly Kit	Single Detector Check – First Check Valve Assembly Kit	Rubber Kit
DN100	89861S7	8986SD7	B93SD7
DN150	89861S9	8986SD9	B93SD9
DN200	89861S10	8986SD10	B93SD10

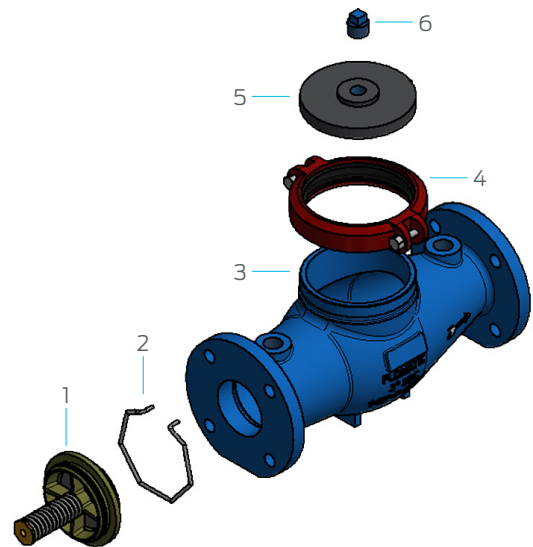
#### SCV

No.	Description	No.	Description
1	Stem Retainer	5	Seat Ring
2	Spring	6	Disc Retainer
3	Stem	7	Disc
4	O-Ring	8	Disc Hold



#### SDCV

No.	Description	No.	Description
1	CV Assembly	4	Coupling
2	CV Spring Clip	5	Cover
3	Body	6	Plug

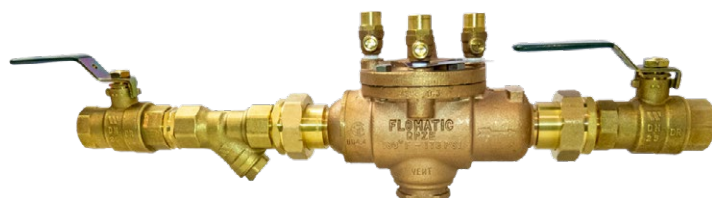


# REDUCED PRESSURE ZONE DEVICE



The RMC/Flomatic Reduced Pressure Zone Device is designed to give maximum protection against backflow caused by either back siphonage or back pressure.

Model	Catalogue No. (Device Only)	Catalogue No. (Complete)	Complete with Lockable Ball Valve
15mm	SR001	SR001C	SR001C-L
20mm	SR002	SR002C	SR002C-L
25mm	SR003	SR003C	SR003C-L
32mm	SR004	SR004C	SR004C-L
40mm	SR005	SR005C	SR005C-L
50mm	SR006	SR006C	SR006C-L
65mm	SR007	SR007C	-
80mm	SR008	SR008C	-
100mm	SR009	SR009C	-
150mm	SR010	SR010C	-
200mm	SR011	SR011C	-



## Description

The RMC / Flomatic Reduced Pressure Zone Device is an economical and durable device that is the easiest on the market to maintain in-line. It consists of two mechanically independent, spring loaded, center stem guided check valves. It also has a hydraulically dependent differential pressure relief valve with the sensing passage set in an integral cast and bronze body, with a single access cover. The assembly has three vertical test cocks and two shut off valves which are quarter-turn, full-port and resilient seated.

The relief valve has a removeable stainless steel seat ring. The check valves are held in place by stainless steel clips and the check valve assemblies are non-interchangeable with silicone discs.

## Features and Benefits

- Maximum protection against back siphonage and back pressure
- Internal by-pass passage (no external plumbing)
- Designed for easy and quick in line maintenance and testing
- Low head loss
- Corrosion resistant
- Maximum working pressure of 1200kPa
- Operating temperature range of 1°C to 82°C up to 50mm BSP Threaded
- Operating temperature range of 1°C to 60°C from 65mm to 200mm Flanged Table E
- Approved to AS 2845-1

## Application

The Flomatic RPZD provides maximum protection to the potable water supply from contamination in high hazard applications such as cooling towers, abattoirs and sewage treatment plants.

## Materials

	15mm - 50mm	65mm - 200mm
<b>Valve Body</b>	Bronze	Ductile Iron
<b>Access Cover</b>	Bronze	Ductile Iron
<b>Polymers</b>	Noryl™, NSF Listed	Noryl™, NSF Listed
<b>Elastomers</b>	Silicone	Silicone, Buna-n (FDA approved)
<b>Springs</b>	Stainless Steel	Stainless Steel
<b>Coating</b>	-	FDA approved fusion epoxy



Uniquely Australian

# REDUCED PRESSURE ZONE DEVICE

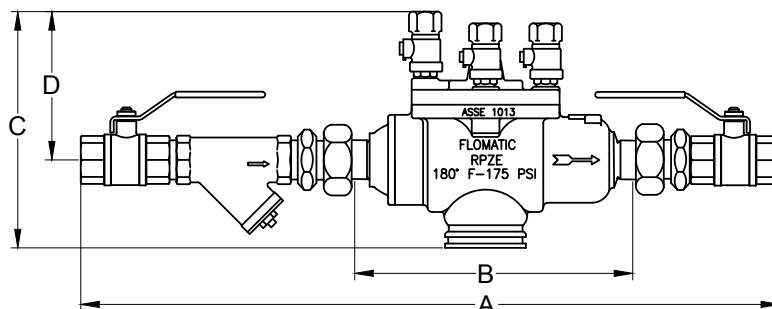
## Technical Specifications

	15mm - 50mm	65mm - 200mm
Maximum working pressure:	1200kPa	1200kPa
Maximum working temperature:	82°C	60°C
Hydrostatic test pressure:	2400kPa	2400kPa
Pipe connection:	BSP Threaded	Table E AS2129 Flanged

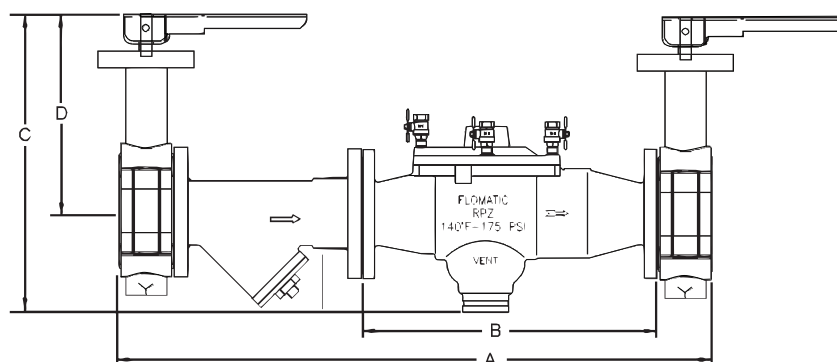
## Dimensions

Size	Part #	A	B	C	D	Width	Wgt with BV	Wgt less BV
mm	-	mm	mm	mm	mm	mm	kg	kg
15	SR001C	400	142	140	85	85	2.5	1.5
20	SR002C	430	142	140	85	85	3	1.4
25	SR003C	530	210	155	95	110	5.6	3.3
32	SR004C	620	225	180	95	120	7.8	4.3
40	SR005C	730	315	230	115	150	14.4	10.3
50	SR006C	810	315	220	117	150	15.5	10

Note: Lockable assembly has same dimensions.



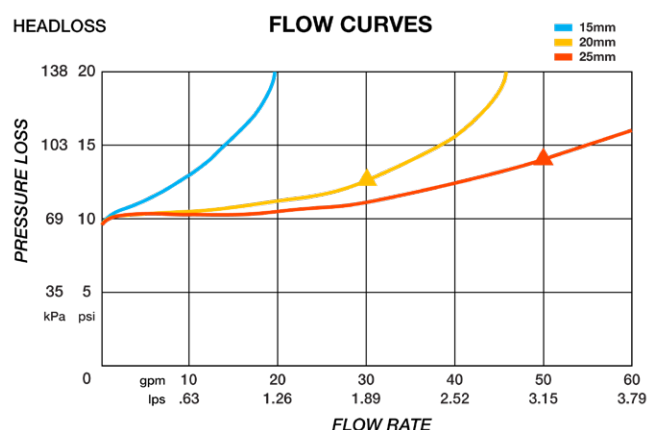
Size	Part #	A	B	C	D	Width	Wgt with BV	Wgt less BV
mm	-	mm	mm	mm	mm	mm	kg	kg
65	SR007C	790	413	300	168	204	74.5	27
80	SR008C	815	415	300	170	210	54.6	27.5
100	SR009C	1000	535	460	190	270	142.5	54.5
150	SR010C	1190	600	480	221	330	156.5	84
200	SR011C	1415	749	535	283	390	276	136



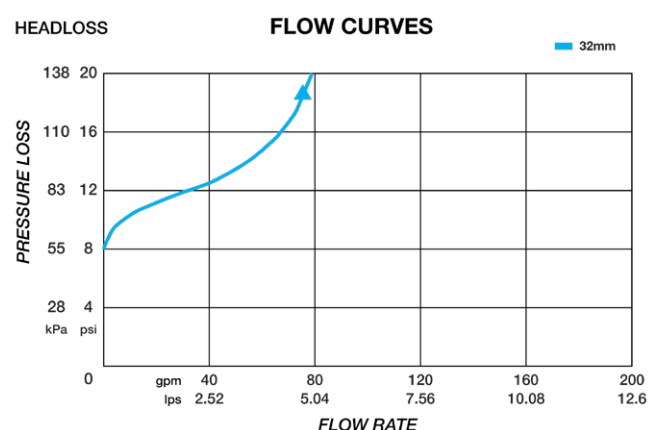
# REDUCED PRESSURE ZONE DEVICE

## Flow Characteristics

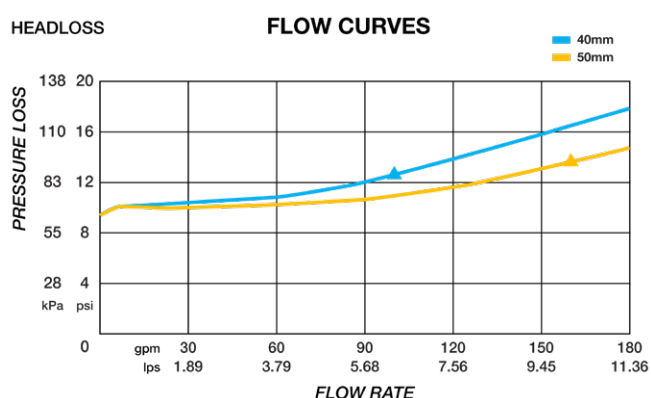
15-25mm MODEL RPZD



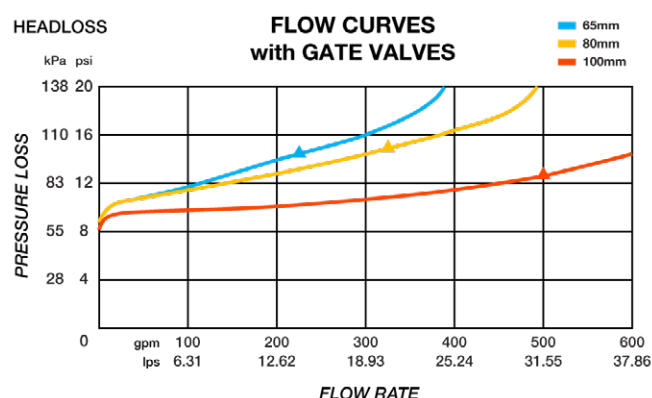
32mm MODEL RPZD



40-50mm MODEL RPZD



65-100mm MODEL RPZD



150-200mm MODEL RPZD

